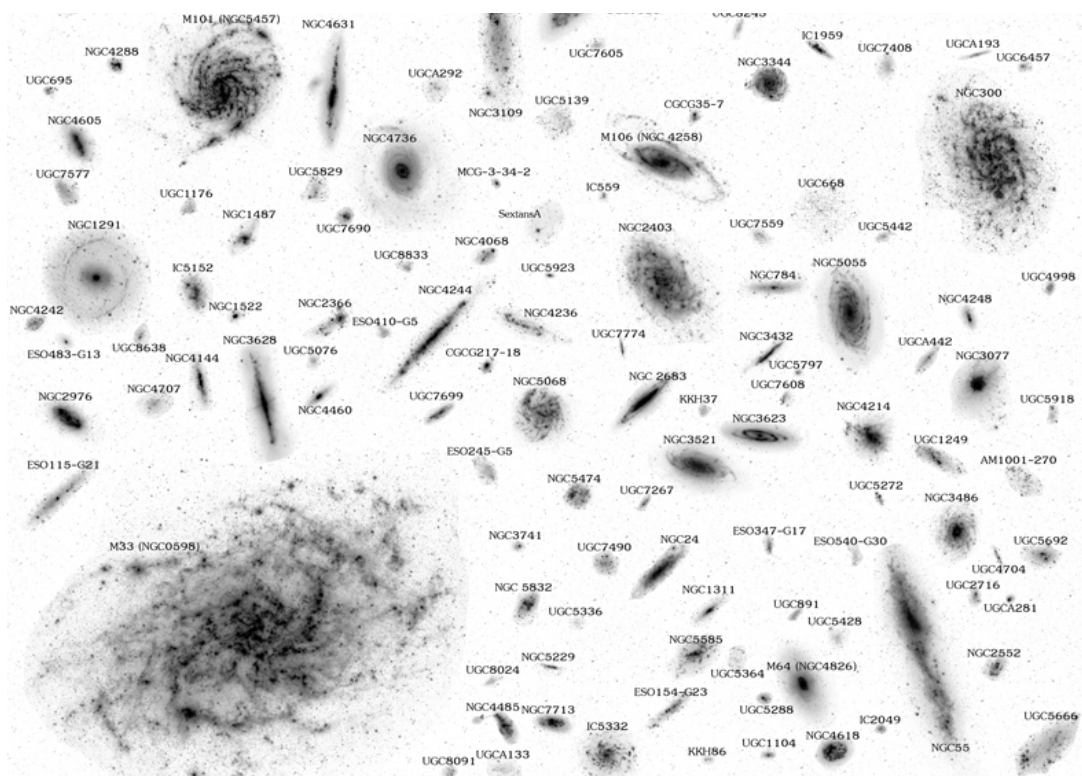


Seminario

Miércoles 14 de Febrero, 2018, 11 hrs (PST), Auditorio IA-Ensenada

Star Formation in Nearby Galaxies: the Low Density Regime

Janice Lee (IPAC/CALTEC)



Is the nature of star formation dependent on galactic environment? I will discuss insights gained from studying properties of massive stars and young stellar clusters at low densities (in dwarf galaxies and in the galactic “field”) based on multi-wavelength surveys of galaxies in the Local Volume, from 11HUGS (11 Mpc Halpha UV Galaxy Survey, to Spitzer LVL (Local Volume Legacy) and most recently, HST LEGUS (Legacy Extragalactic UV Survey).